



**Editor:**  
Diane Orr  
3910 E 132 N  
Rigby, ID 83442  
windabrae@cableone.net  
**Submission**  
Deadline is the  
20th of each month.  
**Club Meetings** are the  
3rd Tuesday  
of each Month.  
Board will meet 1 hour  
prior to the club meeting.

#### INSIDE THIS ISSUE:

<b>Announcements</b>	<b>2</b>
<b>Brag</b>	<b>3</b>
<b>Brag</b>	<b>4</b>
<b>Lacewood Available</b>	<b>5</b>
<b>Lacewood Shelties</b>	<b>8</b>
<b>Akadia Shelties</b>	<b>7</b>
<b>Akadia Shelties</b>	<b>8</b>
<b>I Have a Question</b>	<b>9</b>
<b>Club Meetings</b>	<b>10</b>
<b>Birth Defects in Dogs</b>	<b>11</b>
<b>Birth Defects in Dogs</b>	<b>12</b>
<b>Board Meeting Minutes</b>	<b>13</b>
<b>Board Meeting Minutes</b>	<b>14</b>
<b>Club Meeting Minutes</b>	<b>15</b>
<b>Club Meeting Minutes</b>	<b>16</b>
<b>Calendar of Events</b>	<b>17</b>

# Sheltie Connection

S H E L T I E   C O N N E C T I O N

J U N E   2 0 0 7

## President's Message

**Tricia Harris**

Dear Club Members

I am having a hard time wrapping my mind around the fact that summer is already here. But it seems that show season is in full swing. I wish all of you great success as you show your dogs in all the different venues. Shelties are great because there is so much fun we can have with our little fur companions!

The club will be hosting a summer party in August. It should be either the first or second Saturday in August. We have not firmed up all the plans yet, but the club will be providing the meat and drink and each club member will be asked to bring a dish to go with it. Be thinking about something yummy you would like to share with the club. I look forward to having a time just to meet with all of my "sheltie" friends for some fun chatting and just enjoying our friendships. We will also have some games that the dogs can play. I hope you will each try to keep those date open so we can enjoy having you join with us.

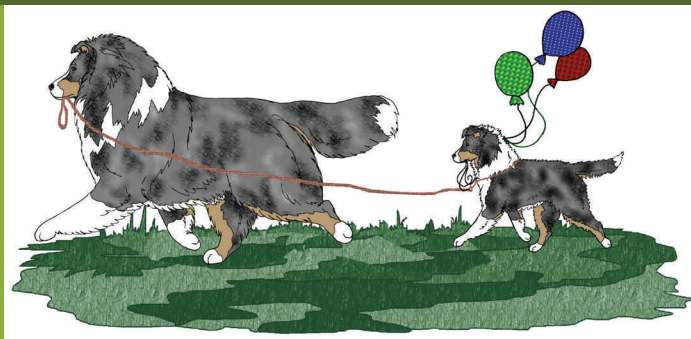
As summer gets hotter lets all remember how hot it must be for our dogs that carry such a heavy coat. I bought a really fun thing at a show last year that makes a big doggy popsicle the dogs can lick and enjoy. You add all kinds of their favorite things and then freeze it. After it is frozen the dogs can lick it until they release the toys or treats which they can then eat. I'm sure you could all make one in an ice cream bucket or big dish. My dogs have had a lot of enjoyment from their popsicles. Try it if you like---

Have a wonderful month; we'll see you June 19<sup>th</sup>.

#### CLUB MAILING ADDRESS:

USSA  
Barbara Soderborg  
USSA Correspondence Secretary  
PO BOX 142, Sandy UT 84091-0142  
TO EMAIL THE CURRENT BOARD:  
lacewoodshelties@comcast.net

**We're on the web!**  
[www.utahsheltie.org](http://www.utahsheltie.org)



# Announcements

## USSA WEBSITE

CHECK OUT OUR WEBSITE AT [WWW.UTAHSHELTIE.ORG](http://WWW.UTAHSHELTIE.ORG)  
YOU CAN DOWNLOAD PAST NEWSLETTERS THERE



**\*\*\*FYI\*\*\***

The August Summer Party will be on either Saturday, August 4 or the 11th. The time, date and place will be decided at next months meeting.

More information will be coming next month.

## Notice

**Anyone who has puppies for sale, or is looking for a puppy or older dog, please contact Barbara Soderborg.**

**You can reach Barbara at 801 561-4616 or email at [saltcityshelties@msn.com](mailto:saltcityshelties@msn.com)**

# WELCOME

To new Member:

LeeAnn Grover



## Happy Birthday

**We want to wish the following members a very happy June birthday!!**

- 10 Caren Ciampini
- 16 Richard Wilkinsen
- 20 Linda Eastman
- 21 Julene Mathews
- 30 Kristie Rassmussen
- 30 Ryan Wilkinsen



## Braggs



*Chrissy Weatherston - Windsor Shelties*

ASCA-OTCH Hill View's Ain't Misbehavin' U-CDX, UD, RA, CGC aka "Tyson" finished his Rally Advanced title on May 5th in South Jordan he got his first leg with a perfect score of 100 lost first place by one second, on May 6th he got a 97 and 1st place then we headed to Logan Utah where he finished his title with a 95 no placement on Saturday May 19th. On Sunday May 20th we moved Tyson up to Rally Excellent and he got first qualifying score with a 95 and 4th place.

Twincreeks Gone With Z Wind aka "Ashley" got her very first blue ribbon on Sunday May 20th in Logan, Utah when she won the Open Sable Class, I want to send a big thanks to Joanne Adams who ended up showing her as Ron was to scared to do it and his nerves got the better of him and I had a conflict with showing Tyson in Rally.



## Braggs

### Brag From Barb Vann, CharBar Shelties:

I just have to brag for the Kruger's and for Kathy Codd, News from Oregon.

May 26, 2007 at the agility trials in Eugene, Or.

Ann Kruger's boy "Clint" became **MACH** CharBar's Dateline Affair, RN, MX, MXJ

This weekend of 4 shows was great for Ann & Clint Three more double Q's.. Q'd 7 runs out of 9...

Sire: Ch Dundee Nightline X CharBar's Among Our Souvenirs

Breeders: Barbara & Charlie Vann

Owners: Tom & Ann Kruger

Kathy Codd's boy "Aero"

CharBar's Aero Dynamic is now AX, **AXJ**

Kathy & Aero also did well.

Sire: Am/Can/Intl Ch Apple Acres Chain Lightning

Dam: Apple Acres CharBar's Electra

Breeders: Barbara & Charles Vann

### Brag from Redcoat Kennel:

Himark Blue Diamond of Redcoat "Captain" passed his CGC test on May 30, 2007. We hope this is the first of many titles for this little blue boy.

### Braggs for Akadia are:

Akadia Brite Eyes, Bushy Tail, now owned by Rita Hoffman is pointed now with 4 pts from the puppy class. "Bliss" is by Ch. Seahaven Chasing Moonbeams out of Akadia Totally Intoxicating (9pts)

Akadia Shake UR Tail Feather, litter sister to above has a Reserve win already too.

Akadia Strawberry Shortcake has added 2 more points to her total now. By Ch. Braelen Let Freedom Ring out of Akadia HellsBells (pts)

Akadia Just Special has added 1 more point to his total. By Ch. Hillviews Patriot Games out of AKadia HellsBells (pts)

Ch. Denian's Deuces Are Wild has done well while staying with us. In 9 all breed shows he has 8 breed wins, 2 Group 1's, 2 Group 2's, and a Group 4.

### Brag from Taflar Corgi's:

Taflar's Money To Burn "Blaze" (Pembroke Welsh Corgi) took BOW in Logan for his 12th point. Now needs one major to finish.

Woodsy Chap's Rolling Hills "Cassidy" (Cardigan Welsh Corgi) took BOB on Sunday in South Jordan and in Logan but had no competition either time.

# Lacewood Shelties

## Has Available



*This darling little little blue girl is available to the right companion home. She is almost 2 years old and has a great outgoing personality. She would be a great companion and would enjoy performance.*

*If you are interested in Lexi contact*

*Tricia at*

*801 375-1192 or*

*email to:*

*lacewoodshelties@comcast.net*



# *Lacewood Shetland Sheepdogs*

*Introducing*

*We are so excited  
to have these two  
babies! Watch for  
them in the Spring*

*Lacewood Bi Starlight  
"Luci"*

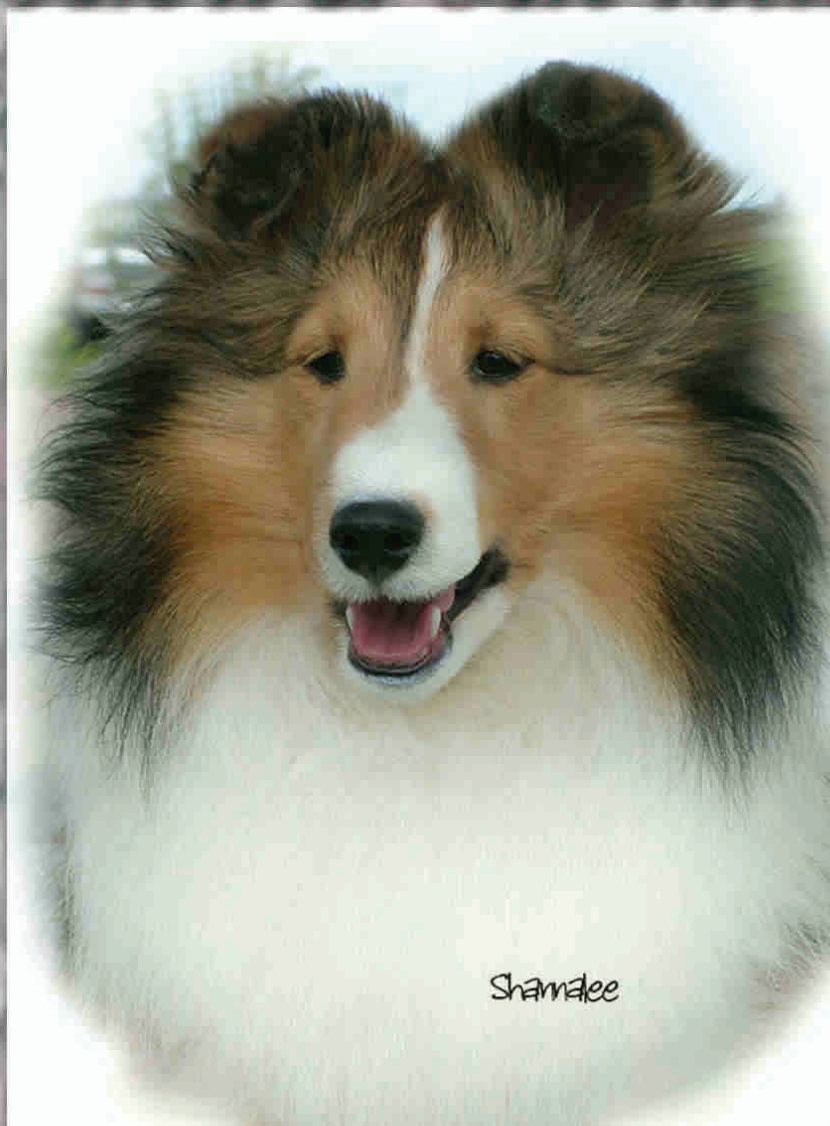
*&*

*Lacewood The Memory Maker  
Zachary*





*Cute is as Cute does...*



*oh, and she is Cute!*

*Solange Lip Service  
owned by Akadia*



# Akadia Shellies

*Where the boys are:*

*Ch. Akadia Hellsablazin*

*Ch. Akadia Just Priceless*

*BlSS Ch. Riverdance Dressed To Kilt*

*Ch. Sunebank Caerleon Just Right*

*Ch. Denian's Deuces Are Wild*

*Akadia Just Special (mjr ptd)*

*See pictures and pedigrees  
at: [akadiashellies.com](http://akadiashellies.com)*



## I Have a Question....

### ***This Month's Question:***

**How long should I feed puppy food? When is the best time to switch my puppy to an adult formula?**

*Personally, I take my puppies off of puppy food at about 4 months of age. I have heard opposing opinions ranging from that you should leave puppies on a puppy food for a year to not ever giving a dog puppy food. I kind of take the middle ground and feed puppy food for about 4 months, after which I switch to an adult food. I think with giant breeds you have to be more careful about giving those breeds extra protein and there is probably some good research to support the idea that the giant breeds should not be given puppy food. I think the pet food industry is starting to address that by coming out with puppy food specifically for giant breeds. Our shelties do not have to achieve as much growth as the giant breeds and seem to do fine on puppy food, but I have also seen dogs that never received puppy food, and they seem to do fine as well. I guess the bottom line would be that you need research the issue and make the decision that feels right to you and your veterinarian.*

Tricia Harris  
Lacewood Shetland Sheepdogs

*When I first got started in dogs about 28 years ago, I was told to switch over to adult food at about 4 months old. So if you must feed puppy food I'd switch between 4 and 6 months.*

*However, since 2000 I've not fed puppy food. My dogs are on a premium kibble and the puppies were started on that when I started them on kibble. So now my answer is you don't need to feed a puppy formula if you are feeding a very good dog food to begin with.*

*There is a school of thought that puppy formulas can make puppies grow too fast. Maybe not a concern for shelties but for corgis where the majority of the weight is in the front end it can be a problem. There have been reports of corgi puppies with panosteitis. This problem of accelerated growth is also the reason behind "large breed puppy foods".*

*So, if you feel you must feed puppy food switch between 4 and 6 mos. to an adult formula. Or feed a premium food and don't feed a puppy formula at all.*

Peggy Newman  
Taflar Corgis



## Club Meetings

Our Club meeting for March will be held on **Wednesday June 13th at 7:00 PM** at Sandy Bicentennial Park, in the building behind the pavilion.

The Park is located at **8680 South 500 East.**

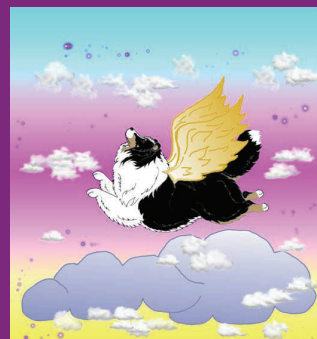
The board will meet at the same location on the same night at **5:45PM**

If you have a proven method of doing ears and would like to share, please let Tricia know at lacewoodshelties@comcast.net

\*\*\*If you know of someone in the club who is in the hospital, ill, or of a death in the club or in the sheltie world, please let Barbara Soderborg know so that she can send a card or flowers.

saltcityshelties@msn.com or call her at 561-4616

The club wishes to send  
Get Well Wishes  
to the following people:



## RECIPE OF THE MONTH:

### Frozen Summer Treats

Mix one level tsp chicken or beef flavored bouillon granules in 2 cups of water. Fill freezer bowl with flavored water leaving 1/2 inch from the top. Put one or two milkbones into bowl. Freeze for 3 hours or until they are frozen. Your dog will lick the ice and then when they are done they can eat the milkbones. Your dog will love them.



## Birth Defects in Dogs.

by: By Dr. P. Machwhirter B.V.Sc. (Hons) Highbury Veterinary Clinic.

Birth defects can occur because of genetic causes, adverse conditions during pregnancy or a combination of both.

**NORMAL DEVELOPMENT:** Puppy development from the time of fertilization can be divided into three phases:

- " Preimplantation, day 0 to approximately day 14.
- " Embryogenesis. day 14 to day 30 approximately.
- " Fetal growth. Day 30 (approx.) to term.

Sperm can survive in the bitch's reproductive tract for over a week before fertilization occurs. Because of this, there can be an apparent variation of up to a week if these phases are timed from the time of mating, rather than from the time of actual fertilization.

The stage during which each developing tissue or organ is most sensitive to disruption is called the "critical period phase". This corresponds with roughly the second to fourth week of the bitch's pregnancy. If damage to the embryo occurs before this time (during the pre-implantation period), the embryo is likely to die and be absorbed. During the fetal phase, (from roughly the thirteenth day of pregnancy onwards), resistance to harmful influences increases.

**CRITICAL PERIODS IN PUPPY DEVELOPMENT:** Fertilization; placentation; brain and spinal cord; cerebellum and cerebrum; vertebrae; tail; head and face; heart; sense organs; vision; limbs; palate; reproductive organs.

**POTENTIAL CAUSES OF BIRTH DEFECTS:** Heredity. Adverse chemical or physical agents, infections and inappropriate nutrition can all result in birth defects.

**HEREDITY:** All dogs carry some genes as hidden recessives. For a recessive gene to appear in a puppy, it must be passed on from both parents. With close inbreeding, the chance of both parents carrying the same genes can be desirable (such as the gene for gold color in Golden Retrievers), or they can be for undesirable defects. Undesirable recessive defects may be immediately apparent as a birth defect, or they may not become apparent until later. Loose inbreeding will also increase the chances of undesirable polygenic characteristics emerging. A polygenic characteristic is one that is controlled by several genes. Examples include: Entropion (the turning in of the eyelids) in breeds such as Rottweilers and Golden retrievers. Blood vessel defects such as patent ductus arteriosus or persistent right aortic arch in German and Belgian Shepherds. Heart valve defects such as subaortic stenosis in Newfoundlands.

To breed top quality show dogs, it is necessary to mate closely related stock. While this technique will increase the chances of producing excellent show stock, it will unavoidably increase the chances of producing dogs with genetic defects. If steps are not taken to stop this, the occurrence of inherited defects will increase in pure-bred dogs this is particularly true. This is particularly true if the breed standard calls for a particular characteristic that encourages the development of a defect but it will also occur, even if this is not the case.

Conditions during pregnancy may also influence the development of inherited defects. Cleft palate is an example of this point. The hard palate develops in the fetus from a pair of processes that shift from being nearly vertical, extending on either side of the tongue, to being orientated horizontally above the tongue. This occurs during the fourth week of fetal development and is followed immediately by the fusion of the two processes to form the roof of the mouth. Any variation in the timing of the horizontal shift, size of the processes, size or location of the tongue, or the width of the mouth cavity, will increase the likelihood that fusion will not occur, resulting in a cleft palate. Cleft palate is a polygenetic defect that occurs across a wide range of breeds. It is also known to be caused by nutrition (excess Vitamin A) and environmental contaminants such as mercury chloride and drugs such as Griseofulvin. Genetic birth defects tend to affect only occasional puppies in a litter, as not all litter mates receive the same genes. Adverse conditions during pregnancy are more likely to affect an entire litter or the majority of puppies in it. There are exceptions to this rule.

**NUTRITION RELATED DISORDERS:** Under - nutrition of the bitch during pregnancy can result in low birth weights, low brain weights, behavioral abnormalities and increased puppy mortality. However, no specific structural defects occur.

Vitamin A deficiency or excess during pregnancy can result in congenital malformation. Excess Vitamin A given to bitches from days 17 to 22 of pregnancy, produced abnormalities and kinked tails. Vitamin A deficiency in



pigs, rats and rabbits has been associated with eye, heart and urinary defects.

Vitamin D deficiency during pregnancy can result in skeletal defects and abnormal dentition. Vitamin D excess has been implicated in impaired bone formation and some "swimmer" puppies.

Many other Vitamin and Minerals, if deficient or given in excess during pregnancy, have been shown to cause developmental defects in laboratory animals. Copper deficiency can cause abnormal brain development, abdominal hernias and skeletal abnormalities. Iron deficiency can cause anemia and deaths in offspring. Manganese deficiency can cause loss of balance, due to failure of the middle ear to develop.

**Teratogens:** A teratogen is an agent that disrupts the normal development process of the foetus. Examples of teratogens that have been shown to cause damage in dogs include:

" **Insecticides:** Carbaryl, an insecticide in flea powders such as Troy 7-dust is safe in puppies and adults but can cause birth defects when fed to bitches during pregnancy. Defects include short jaws, no tails, extra digits, skeletal malformations and fissures along the abdomen with displacement of intestines and abdominal contents. Dystocia (difficult births) from uterine atony (failure of the uterus to contract) also occurred. Other insecticides such as DDT and dichlorvos have been shown to cause birth defects in laboratory animals but have not yet been shown to cause defects in dogs.

" **Fungicides:** Captan given to bitches during pregnancy has produced puppies with crooked tails, hydrocephalus and failure of the abdominal wall to close. Mercury chloride ( a fungicide and an environmental contaminant in fish and meat) caused cleft palates, open fontanel, extra digits, extra kidneys and umbilical hernias.

" **Drugs:** Griseofulvin, an anti-fungal drug, causes mall, weak, short haired puppies with cleft palates. Testosterones and progesterone's may cause masculinisation of the clitoris and external genitals. Corticosteroid treatment has been associated with anasarca ( dead ,swollen) puppies and deformed limbs. Many other drugs have been proven to cause birth defects in other species.

**Physical conditions:** Fetus are particularly sensitive to high maternal body temperature, either due to high environmental temperatures or to fevers. This is because the fetus can not readily dissipate heat back into the mothers circulation. Brain tissue is the most likely site to be damaged. Fetal death, growth retardation or developmental abnormalities also occur.

**Infections:** Parvovirus infections in bitches during pregnancy can cause abnormal heart development in puppies if infection occurs during the critical stage of heart development. Infections in puppies after birth attack the digestive system.

While much has been discovered about the causes of birth defects in puppies, there is still much more to learn. Steps that a dog breeder should take to prevent birth defects vary depending on the different problems.

General precautions should include:

1. Learning about different genetic causes of birth defects in particular breeds or family lines, and, where possible, adopting strategies to reduce the occurrence of these genetic problems.
2. Providing adequate, rather than excessive or deficient, levels of nutrients in the bitch's diet.
3. Keeping the bitch healthy and not exposing her to infections, drugs, environmental contaminants or extremes of temperature during pregnancy, particularly during the critical stages of fetal puppy development. i.e., between the 14th and 30th days of pregnancy.

**BOARD MEETING MINUTES**  
**MAY 15, 2007**  
**Sandy Bicentennial Park**  
**8680 south 500 east**

**ATTENDEES:** Tricia Harris, Diana Beebe, Barbara Soderborg, Carol Cowley, Gene Cowley,  
Cherie Hyde, Jim Newman, Judy Williamson, Julene Mathews  
**Guests:** Peggy Newman, Ava Pickering

Conducting: Tricia Harris, President  
Minutes: Diana Beebe, Recording Secretary

**WELCOME:** Tricia Harris welcomed all in attendance and brought the meeting to order at 5:58pm.

**BOARD MEETING MINUTES:** Julene Matthews made a motion to accept the board minutes as written. Judy Williamson seconded the motion. The motion passed with unanimous vote

**PRESIDENTS REPORT:** Website is up and working

**VICE-PRESIDENTS REPORT:** Discussed upcoming educational classes. Ideas consisted of having Dr. Pew come and speak on whelping, bringing someone in to speak on Holistic care. We also discussed the option of holding a Virtue Puppy Match. Further discussion will be continued in the future

**SECRETARY'S REPORT:** Our show had over 3,000 entries. We had very positive feedback. Discussed thank you cards are given to the Stewards if they had not been thanked yet and also it was agreed on that the Show Secretary receive a nicer gift for all of the hours of work they put into organizing the show. Discussed making sure that the Show Secretary from last year also receives a gift. This will be brought to the club for vote.

**TREASURER'S REPORT:** Purchased checked and changed address on checks to the PO Box. Cheri Hyde presented the financial report. Discussed people still needing to pay for the trophies they said they would donate.

**OLD BUSINESS:** Discussed things that went well with the show and what items may need improving for the future.

**NEW BUSINESS:** Discussion on meeting time and place during the summer.  
Meet inside or out:

The Trailer inventory and organizing. Barbara Soderborg volunteered her time.  
2008 Specialty.

Summer party: Judy volunteered to be over food. Club will supply food and drinks. Julene will secure a park. Discussed having games for the dogs and hav-

ing the party either on the 4<sup>th</sup> or 11<sup>th</sup> of August

There was no other business.

Judy Williamson made the motion to adjourn the meeting. and Barbara Soderborg seconded the motion. The motion passed with a unanimous vote

The meeting adjourned at 6:47pm



**CLUB MEETING MINUTES**  
**MAY 17, 2007**  
**Sandy Bicentennial Park**  
**8680 south 500 east**

**ATTENDEES:** Tricia Harris, Diana Beebe, Barbara Soderborg, Carol Cowley, Gene Cowley,  
Cherie Hyde, Jim Newman, Judy Williamson, Julene Mathews, Peggy Newman, Tomi Hamblin, Kristin Sittner, Tony Plott, Ernie Ciampini, Caren Ciampini, Doug Perry, Pam Perry, Mike Cornella, Linda Cornella, Jeanette Spencer, Shanna Wilkinson, Cheryl Sorensen, Ava Pickering.  
Guests:

Conducting: Tricia Harris, President  
Minutes: Diana Beebe, Recording Secretary

**WELCOME:** Tricia Harris welcomed all in attendance at 7:03pm.

**CLASS:** Tricia Harris taught us a class on colors in Shelties.

Tricia Harris brought the official meeting to order at 7:45pm.

Corrections to the April minutes were made and documented. Motion to approve the amended minutes, by Tony Plott, second by Peggy Newman. Passed.

**BRAGS BY CLUB:** several people shared their recent accomplishments

**PRESIDENTS REPORT:** website is up and working

**VICE-PRESIDENTS REPORT:** Discussed different classes we could have.

Spoke about Lazar treatment in dogs and Ava Pickering said she would speak to her vet. to see if he would be available to speak with us. Herding training in Huntsville and Instinct training- Kristen Sittner will get more details.

**SECRETARY'S REPORT:** Barbara Soderborg asked the club if they would rather have the summer meetings inside or outside and should we change the day of the week. Vote was taken to the club and the majority of the vote went for the meeting to stay inside and we keep it on Tuesday evenings.

**TREASURER'S REPORT:** Cheri Hyde went over the budget. The budget is on file.

Moved to approve the budget was made by Barbara Soderborg and second was Mike Cornella.

Show report is not yet completed

Motion passed

**NEW MEMBERS:** LeeAnn Grover was voted into the club and approved.

**OLD BUSINESS:** Jim Newman, the Show Secretary, reported on the show. We had positive responses from many people. It was proposed that we give a nice gift to the show secretary to let them know how much we appreciate all the work they do. It was also proposed that we extend this same gift to last years show Secretary. Mike Cornella made the motion and Carol Cowley second. The motion passed

**NEW BUSINESS:** The trailer inventory needs to be done. Barbara Soderborg, Mike Cornella, Tony Plott and Cheryl Sorensen volunteered to take this on. Discussed the summer Party and time to have it. Judy Williamson volunteered to be over food. Club will supply food and drinks. Julene Williams will secure a park. Discussed having games for the dogs and having the party either on the 4<sup>th</sup> or 11<sup>th</sup> of August. Looking at having party around 2pm. More discussion in future meetings.

**2008 SPECIALTY-** Cheryl Sorensen Volunteered to be the Show Chairman. A motion was made to have Jim Newman as the Show Secretary for the 2008 specialty. Judy Williamson made the motion and Cheryl Sorensen 2<sup>nd</sup> the motion. Motion passed.

Judy Williamson made a motion to sign a letter of intent for a 5 year contract with South Jordan. Peggy Newman second the motion. The motion passed with 5 abstentions.

Kristen Sittner was asked to look at Performance Judges that could also move to Conformation Judges.

There was no other business.

Mike Cornella made the motion to adjourn the meeting and Cheri Hyde seconded the motion. The motion passed with a unanimous vote

The meeting adjourned at 8:16pm



## **Calendar of Events**

**June 19, 2007 — Club Meeting**  
**June 12 & 13 2007 — Filer Dog Shows**  
**June 14-17 — Blackfoot Dog Shows**  
**June 19-21 — Billings Montana Dog Shows**  
**June 22 & 23 — Great Falls Montana Dog Shows**  
**June 24-26 — Missoula Montana Shows**

